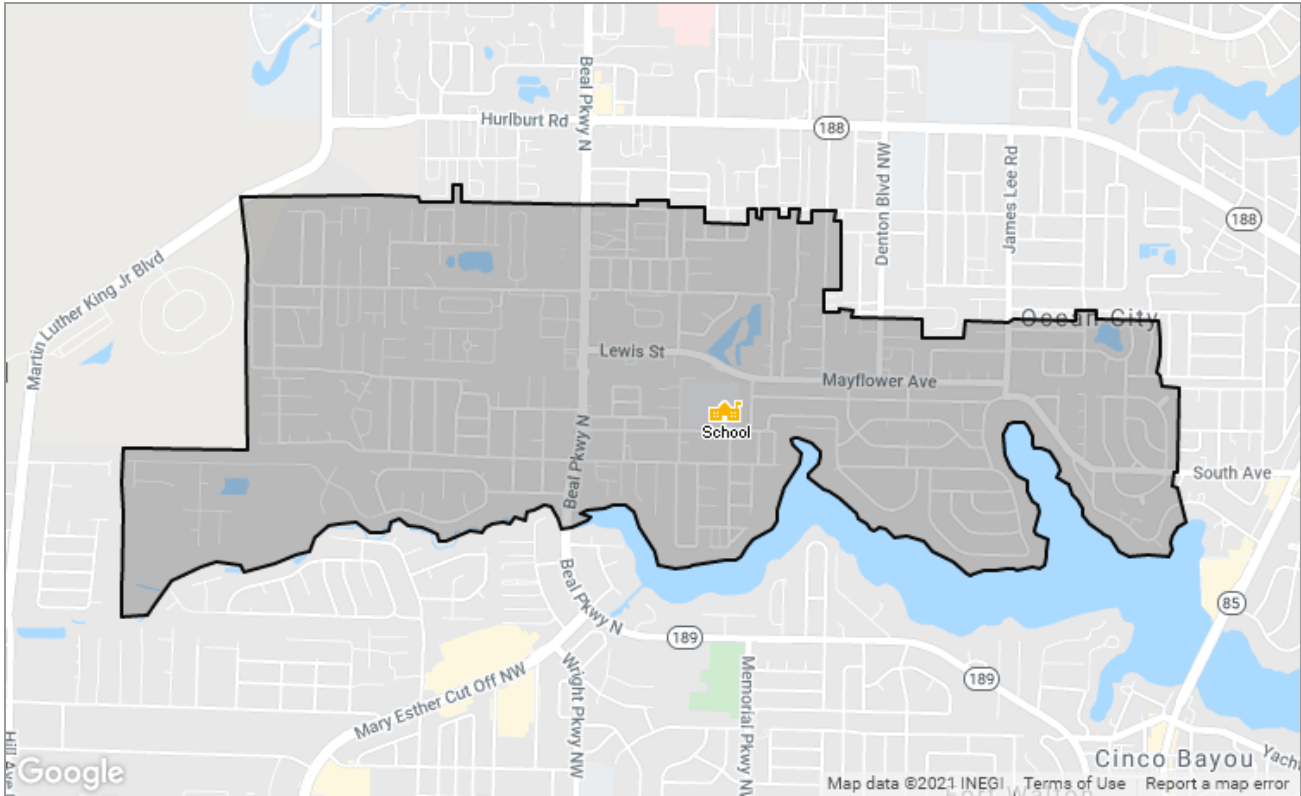




SCHOOL REPORT

Wright Elementary School

Ft Walton Bch, Florida



Presented by

Francisco Montes de Oca | Realtor

Florida Real Estate License: SL3477438

Mobile: (203) 427-5977

Main: Francisco@FMDOHomes.com

Agent: FMDOHomes.com

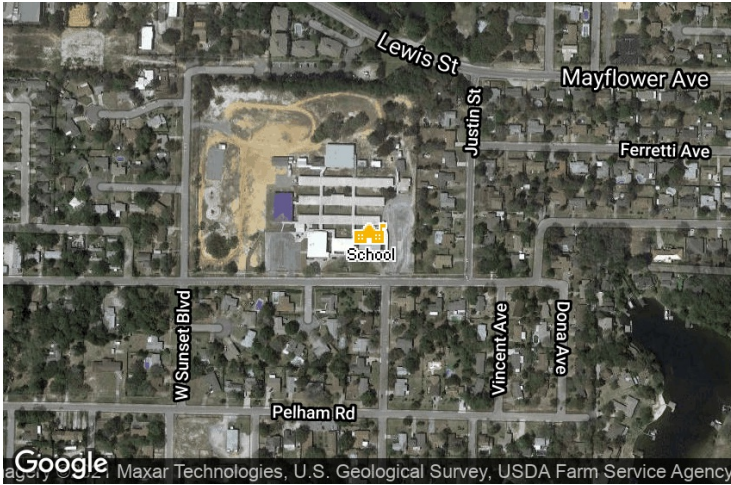
REALTY ONE GROUP EMERALD COAST

321 Harbor Blvd

Destin, FL 32541



School: Wright Elementary School



School Details

Name
Wright Elementary School

Level
Elementary

Type
Public

Grades Served
PK, K-5

School District
Okaloosa County School District

Address
305 Lang Rd, Ft Walton Bch, FL 32547

Phone
(850) 833-3580

School Facts

Wright Elementary School

Okaloosa County School District

Overall Grade	B+	A-
Total Enrollment	625	31,855
Students per Teacher	17:1	17:1
Students in Free Lunch Program	71%	45%
Academic Grade	B+	A-
Average GPA	—	3.42 (out of 4506 responses)
Math Proficiency	69%	71%
Reading Proficiency	62%	63%
Gifted Students	1%	—
AP Enrollments	—	—
Graduation Rate	—	88%
Average ACT Score	—	26 (out of 1100 responses)
Average SAT Score	—	1,190 (out of 947 responses)
Teacher Grade	B	B
Average Teacher Salary	\$51,432	\$51,432
Teachers in 1st or 2nd Year	—	29%

About this data: Facts and proficiency scores are provided by Niche, which compiles scores, community reviews and other data about schools across the United States. Ratings for this school are based on the most recent available facts for each school and district. Data compiled from the U.S. Department of Education, Private School Universe Survey, Common Core Data and others. Source: Niche Update Frequency: Quarterly



Community Reviews for this School

Posted: 2/14/2017 by Parent

As a parent of 3 students attending Wright Elementary, I find that the campus environment is warm and friendly. My sons have the best teachers, administration, and technology available to enhance their education. The pe and music programs are phenomenal, with teachers that are nurturing to all students. Parents are always welcomed by staff and administrators. Wight is the "right" choice!!!